

切割/焊接/自动化/智能化

SERIES OF PRODUCT PICTURE ALBUMS



为工业智造
提供先进的激光应用解决方案

浙江骏屹激光设备有限公司

ZHEJIANG JUNYI LASER EQUIPMENT CO., LTD.

浙江运营中心:浙江宁波高新区聚贤路587弄15号A3#11-1
浙江生产基地:浙江宁波市慈溪市慈东大道2088号

全国统一免费咨询热线: 400-880-1353

邮箱: junyi@junyilaser.com 固话: 0574-86563356

传真: 0574-86563139 网址: <http://junyilaser.com>

注:产品图片及各种参数以订购的实际情况为准,本资料不作为验收标准,解释权和版权属于浙江骏屹激光设备有限公司,翻印必究。





骏屹激光
JUNYI LASER

高性价比激光切割应用解决方案

LASER CUTTING APPLICATION SOLUTION

JUNYI

CONTENTS

目/录 JUNYI
LASER EQUIPMENT

 **骏屹激光** EQUIPMENT MANUFACTURING

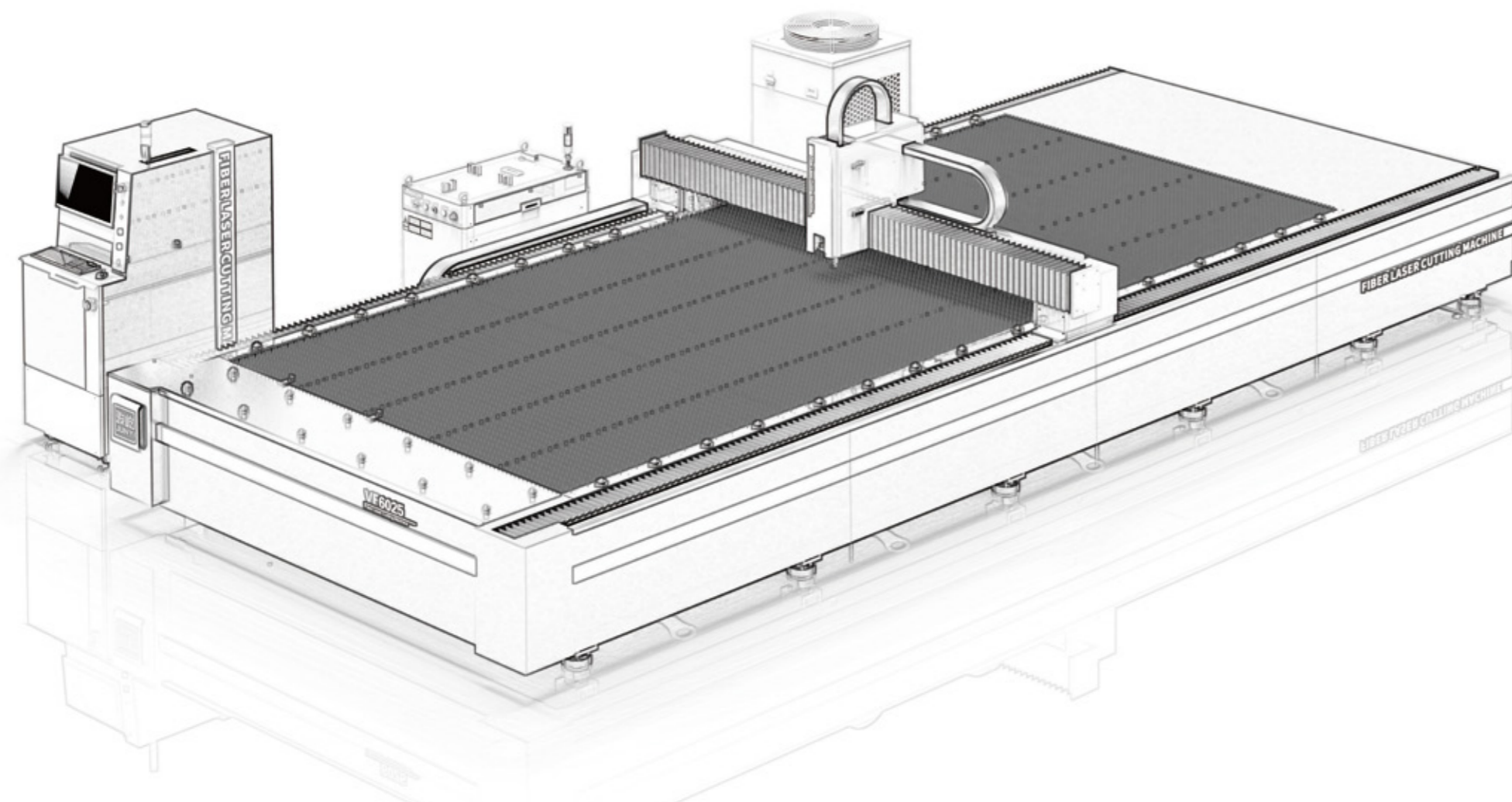
01/08 COMPANY PROFILE
企业概况

09/12 CERTIFICATION & SERVICE
认证服务

13/40 PRODUCT
产品中心

41/42 SALES NETWORK
销售网络





ENTERPRISE CULTURE

企业文化



企业精神

以奋斗者为本, 为员工和客户
创造价值



核心价值观

持续为企业创造更高效益
为员工创造更优福利
为社会创造更大价值



核心竞争力

可靠的品质

——可靠耐用、误差小、切割一步到位

良好的服务

——提倡顾客至上, 服务第一
第一时间为客户解决问题

品牌影响力

——骏屹激光在江浙沪一代拥有广泛影响力
良好的口碑对企业有这至关重要的作用



JUNYI

LASER EQUIPMENT

ABOUT JUNYI

关于我们

浙江骏屹激光设备有限公司是以激光切割机、激光切管机、精密激光设备以及激光焊接设备的生产、研发和销售为一体的智能制造企业。公司团队人员专业知识扎实,创新力强,致力于为海内外用户提供更节能高效的激光设备和更先进的激光应用解决方案。今后我们会继续努力,推出更多创新产品回馈一直以来支持信任我们的客户。

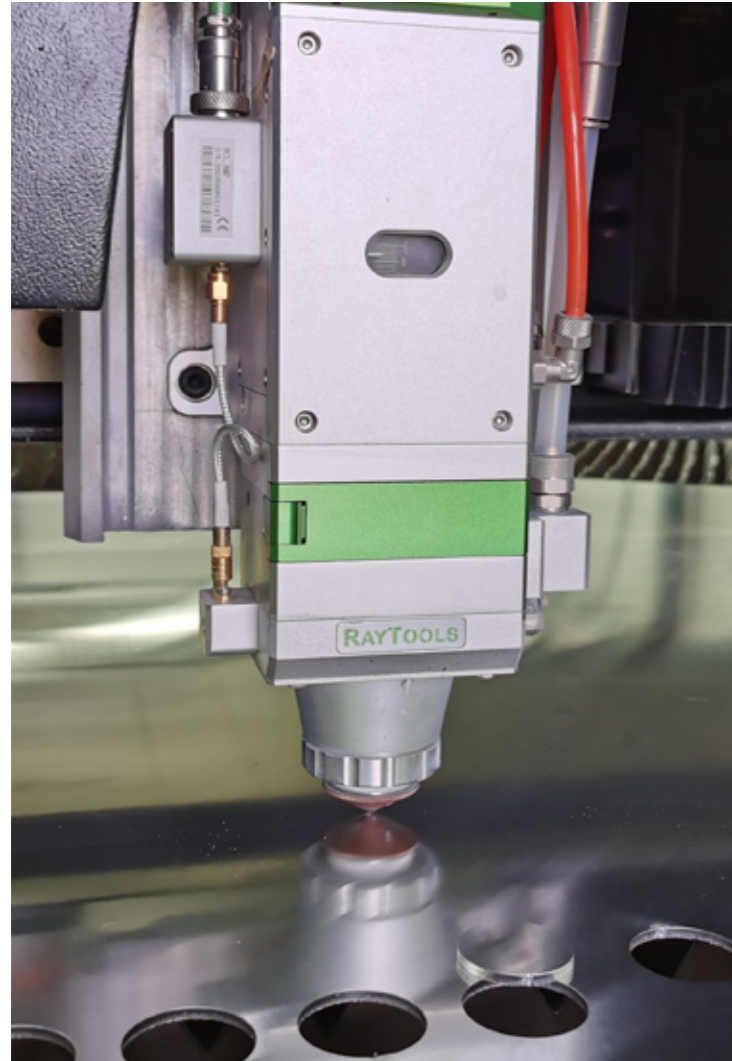
Zhejiang Junyi Laser Equipment Co., Ltd. is an intelligent manufacturing enterprise integrating the production, research and development and sales of laser cutting machines, laser pipe cutting machines, precision laser equipment and laser welding equipment. The company's team members have solid professional knowledge and strong innovation, and are committed to providing more energy-saving and efficient laser equipment and more advanced laser application solutions for users at home and abroad. In the future, we will continue to work hard to launch more innovative products to give back to customers who have always supported and trusted us.



40000 平方米

2000+ 年生产



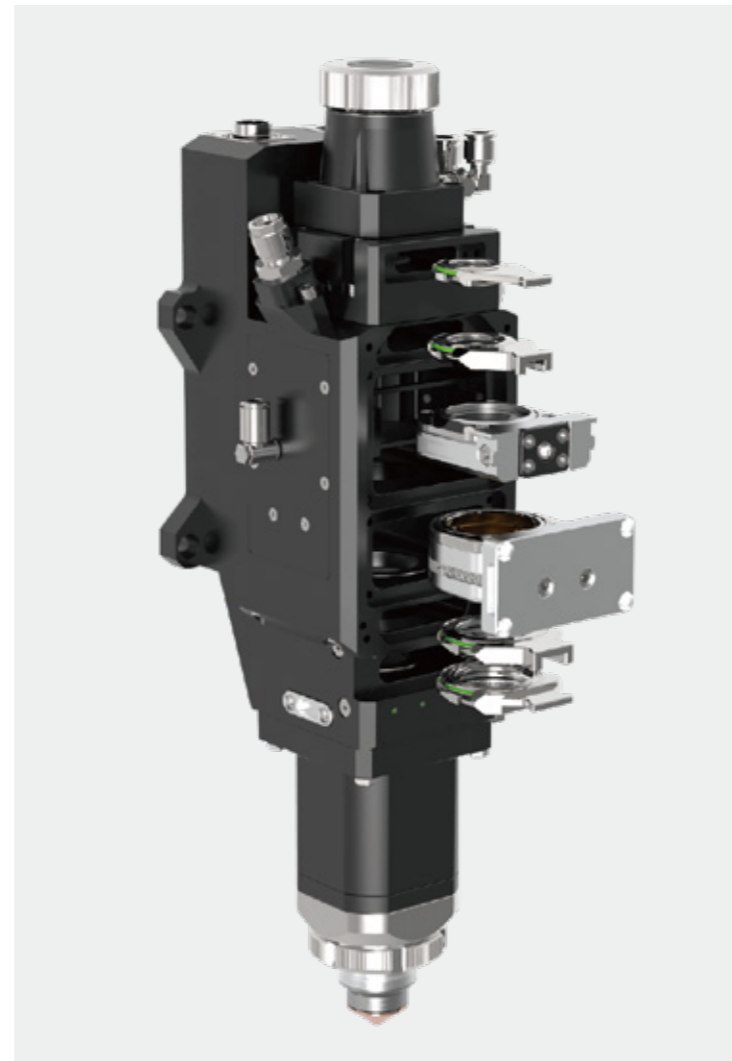


TECHNICAL ADVANTAGES

技术优势

骏屹持续高效率生产制造体系，强调技术优化和持续改进。严格的品质把控，先进的生产设备，专业的操作人员和良好的作业环境，实现了产品的稳定性和可靠性。我们始终以高度的责任感和使命感，全心倾注每一个细节，缔造具有竞争力的产品！

We persist in keeping an effective manufacturing system, emphasizing technology optimization and continuous improvement. Rely on the strict quality control system, advanced production line, professional operators and clean working environment, we could guarantee the stability and reliability of machine. To remain the high competitive machine, we focus on the details of equipment with strong sense of accountability and mission!



工欲善其事，必先利其器

Seiko Manufacturing Achieves Reliable Quality

以持续改进 创优质品牌 让顾客满意 求管理效益





整洁的生产基地、稳定的生产设备，为生产提供良好的保障

Based on the clean factory and stable production equipment, we could guarantee high production efficiency.



创新灵活 技术突破

Innovation, Flexibility, Advanced technology

严格把控每一个细节，用匠心精神制造高品质产品



权威认证 值得信赖

Authoritative certification is trustworthy

骏屹带您领略不凡的技术力量

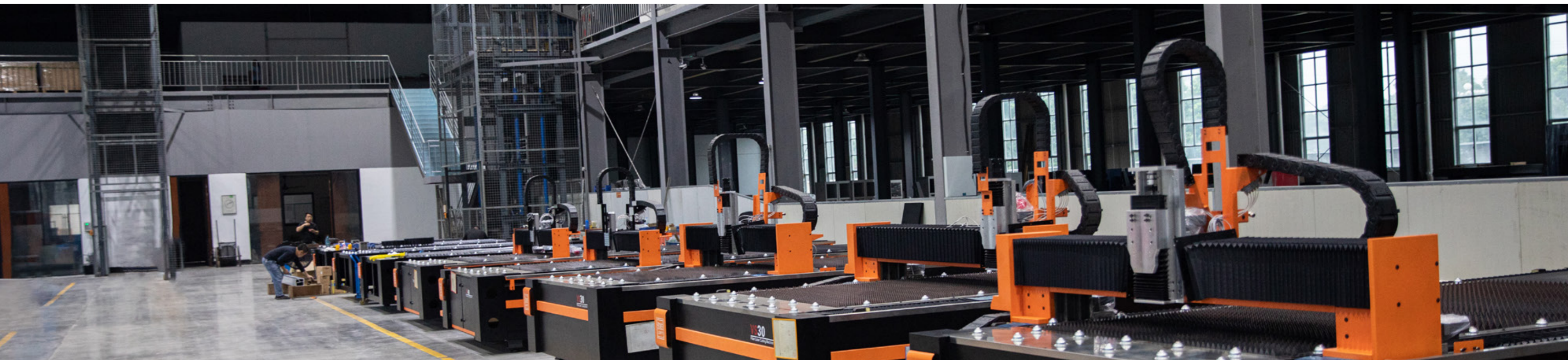
以“把握全局、审时度势的判断力”“大胆突破、敢于竞争的创新力”“博采众长、开拓进取的文化力”“保证质量、诚实守信的亲合力”为发展准则。

以“先进的科技技术”“科学的管理理念”“优良的品质保证”“精密周到的客户合作”为信条，使骏屹在激烈的竞争中脱颖而出，备受关注和认可。



产品通过欧洲CE、美国FDA认证





24小时服务热线 / 24-Hour Online Service

骏屹提供一年365天的电话技术支持,甚至可根据您的愿望由专家进行远程诊断,我们还会定期拜访客户,以提供服务品质,并及时了解客户使用中遇到的问题及其他需求、有关行业动态及信息。

Junyi company could provide 365 days of technical support by telephone a year, and our technical experts could also provide remote diagnosis if it is necessary. Further, we would regularly visit our consumers'factory so as to help them to find the potential problems, to provide instant after-sale service and to recongnize the latest news of industry.

维修维护 / Repair&Maintenance

享受我们的预防性维护管理措施以实现设备最大利用率。骏屹服务合同的模块式结构确保您得到完全符合您的希望和需要的服务。根据用户的状态,制定培训计划,对用户操作人员进行培训及技术交流,将公司的最新产品信息及动态信息介绍给大家。

If you have chance to enjoy our preventive maintenance service, you could realize the maximum equipment rate while operating the machine. The modular structure of Junyi service contract could ensure the perfect service according to your wishes and basic need. In addition, we could make a unique training plan, share the newest information and provide the technical support for users and workers.

排除故障 / Fault Clearing

帮助客户分析故障产生的原因,制定故障解决方案,并最终排除故障,使系统尽快恢复正常运行和业务处理。

In order to help consumers to restore the operation system as soon as possible, we would analyze the reason of fault and make practical solutions for consumers.

备件服务 / Spare Parts Service

由于骏屹产品采用大量供应的模块化结构设计,互换性高,能保证更换迅速。各地分公司与办事处也对一些常用的备件进行备库,问题处理将更加及时、高效。

Based on the large quantity of modular structure design, our company has high inter-change ability and abundant components both at branch office and agencies. Therefore, all the problems could be solved effectively.

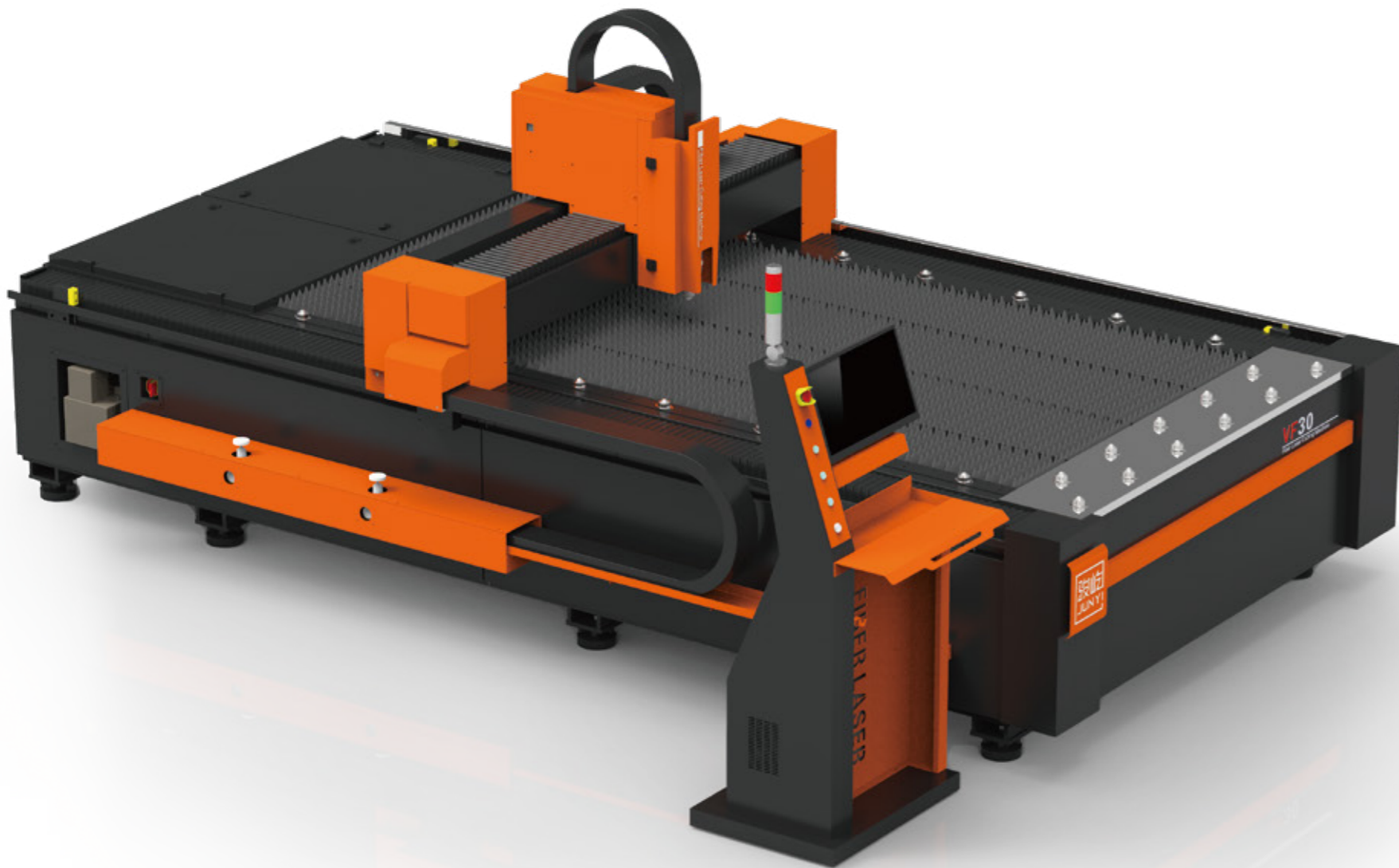
现场服务 / On-site Service

骏屹专家在多个地区日夜待命,并且通过覆盖中国的服务网络能迅速到场服务,这能给您大幅度降低停产损失。

Our experts always prepare to help consumers in many areas day and night, and they could rapidly arrive at the service site by a complete service network covering China. All the efforts could help you reduce the loss of shutdown within short time.

VF-30 光纤激光切割机

VF-30 FIBER LASER CUTTING MACHINE
高刚性/高稳定性/高精度/高效防尘



VF-30技术参数 VF-30 Technical Parameter

性能指标参数 Performance index	机型参数 Parameter
加工幅面(长×宽) Working area (length×width)	3000*1500mm
X轴行程 X-axis stroke	1500mm
Y轴行程 Y-axis stroke	3000mm
X/Y 轴定位精度 Positioning precision of X/Y axis	±0.02mm/m
X/Y 轴重复定位精度 Repositioning resolution of X/Y axis	±0.03mm
数控系统 Numerical control system	柏楚/维宏
相数 Phase	3
电源额定电压 Rated voltage	380V
频率 Frequency	50Hz
总电源防护等级 Protection rating of main power	IP54

适用范围 SCOPE OF APPLICATION

用于切割0.5-16mm碳钢板, 0.5-8mm不锈钢板, 镀锌板, 电解板, 0.5-4mm铝合金, 0.5-3mm黄铜与紫铜等有色金属材料。

It is used for cutting 0.5-16mm carbon steel plate, 0.5-8mm stainless steel plate, galvanized sheet, electrolytic plate, 0.5-4mm aluminum alloy, 0.5-3mm brass and copper and other non-ferrous materials.

产品特点 PRODUCT FEATURES

- ▶ 高性能光纤激光器, 性能稳定使用寿命达100000小时;
- ▶ 退火时效处理、龙门精铣加工而成, 高刚性高稳定性;
- ▶ 数控双驱保证切割精度, 高速高精度;
- ▶ 高定位床身设计, 工作寿命超过10年。

- ▶ High performance fiber laser generator with stable performance could be used for 100000 hours.
- ▶ All the casting iron treated with annealing aging treatment and gantry finishing milling, so as to ensure the high rigidity and high stability.
- ▶ CNC dual drive ensures cutting accuracy, high speed and high precision.
- ▶ High positioning bed design, working life of more than 10 years.

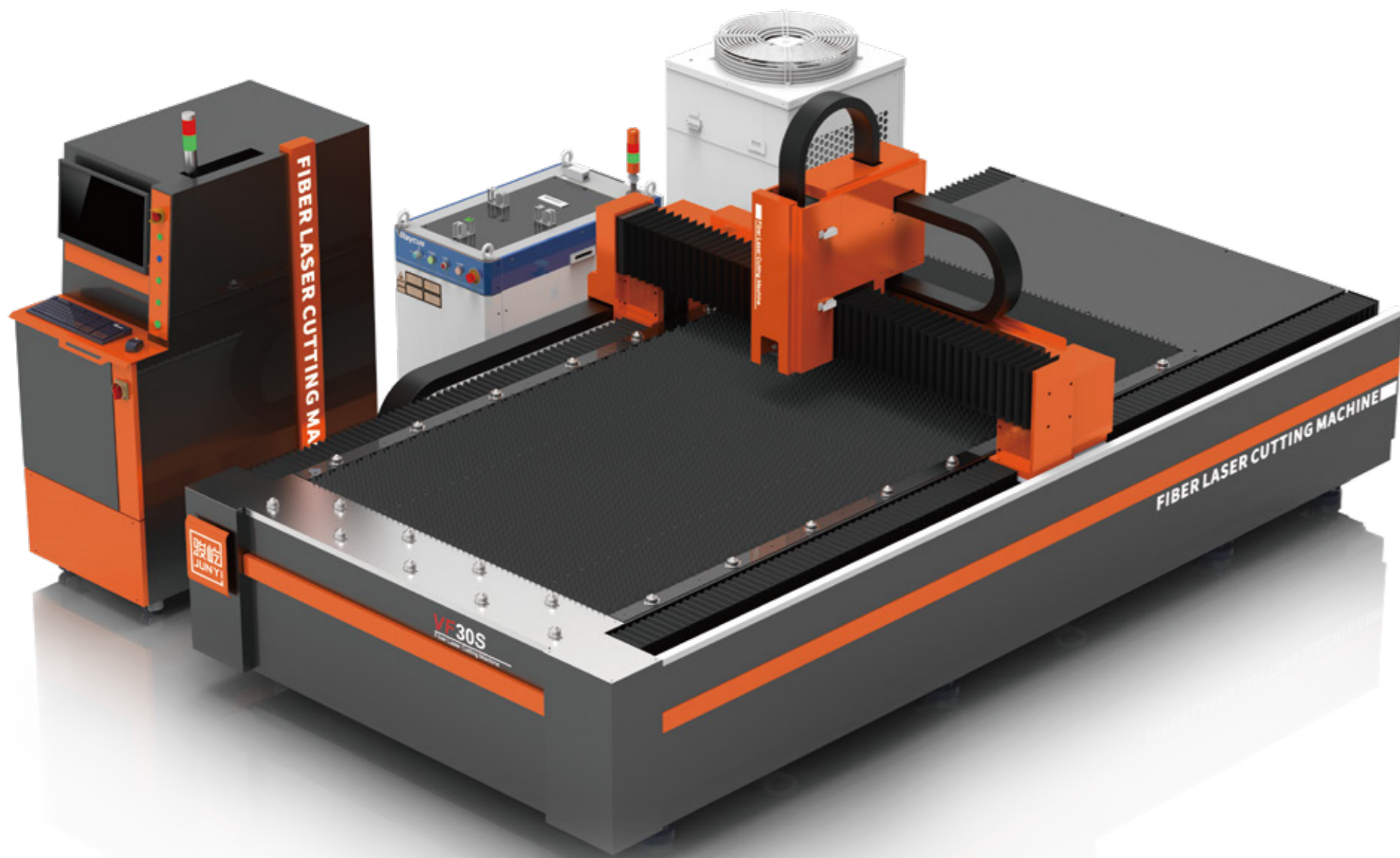


切割案例
CUTTING CASE



VF-30S 光纤激光切割机

VS-30 FIBER LASER CUTTING MACHINE
高刚性/高稳定性/高精度/高效防尘



VF-30S技术参数 VF-30S Technical Parameter

加工幅面(长 × 宽) Working area (length × width)	3000*1500mm
X轴行程 X-axis stroke	1500mm
Y轴行程 Y-axis stroke	3000mm
X/Y 轴定位精度 Positioning precision of X/Y axis	±0.02mm/m
X/Y 轴重复定位精度 Repositioning resolution of X/Y axis	±0.03mm
数控系统 Numerical control system	柏楚/维宏
最大速度 Maximum speed	90000mm/min
相数 Phase	3
电源额定电压 Rated voltage	380V
频率 Frequency	50Hz
产品功率段 Laser power	2000W-6000W
总电源防护等级 Protection rating of main power	IP54

适用范围 SCOPE OF APPLICATION

用于切割0.5-20mm碳钢板, 0.5-10mm不锈钢板, 镀锌板, 电解板, 0.5-8mm铝合金, 0.5-8mm黄铜与紫铜等金属材料。

Used for cutting 0.5-20mm carbon steel plate, 0.5-10mm stainless steel plate, galvanized sheet, electrolytic plate, 0.5-8mm aluminum alloy, 0.5-8mm brass and copper and other metal materials

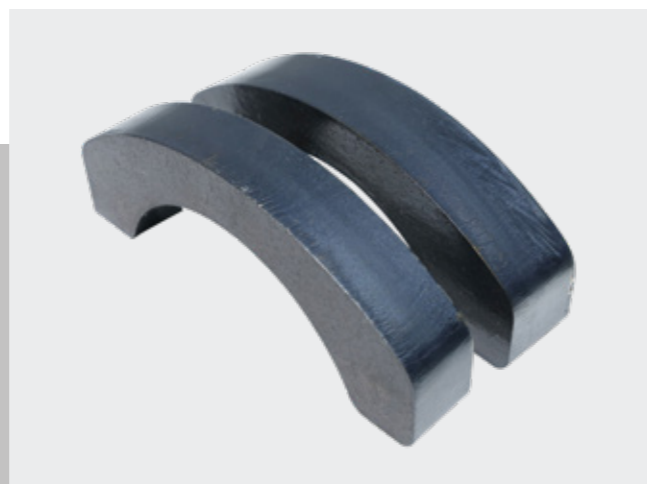
产品特点 PRODUCT FEATURES

- ▶ 选用一线品牌激光器, 激光束质量更卓越;
- ▶ 全机型采用非接触式随动系统, 无损切割, 提高切割质量;
- ▶ 日本伺服电机系统, 一线品牌, 值得信赖;
- ▶ 进口高精度滚珠丝杠与导轨传动系统, 配置越级;
- ▶ 工业级水冷系统, 保证机器稳定运行;
- ▶ 航空铝质龙门横梁, 质量更轻, 切割速度更快。

- ▶ We choose the first-class laser generator, so the laser beam quality is more excellent.
- ▶ The whole machine adopts non-contact follow-up system, undamaged cutting, improving cutting quality.
- ▶ Japan servo motor is a reliable and first-class brand.
- ▶ Imported high-precision ball screw and guide rail transmission system, advanced configuration.
- ▶ Industrial-grade water cooling system could ensure the stabling of the machine.
- ▶ Aviaon aluminum gantry beam, lighter weight and faster cutting speed.



切割案例
CUTTING CASE



VF-3015H 光纤激光切割机

VF-3015H FIBER LASER CUTTING MACHINE
高刚性/高稳定性/高精度/高效防尘



VF-3015H技术参数 VF-3015H Technical Parameter

加工幅面(长 × 宽) Working area (length × width)	3000*1500mm*2
X轴行程 X-axis stroke	1500mm
Y轴行程 Y-axis stroke	3000mm
X/Y 轴定位精度 Positioning precision of X/Y axis	±0.02mm/m
X/Y 轴重复定位精度 Repositioning resolution of X/Y axis	±0.03mm
数控系统 Numerical control system	柏楚/维宏/MAX
最大速度 Maximum speed	100000mm/min
相数 Phase	3
电源额定电压 Rated voltage	380V
频率 Frequency	50Hz
产品功率段 Laser power	2000W-6000W
总电源防护等级 Protection rating of main power	IP54

适用范围 SCOPE OF APPLICATION

板材激光切割专用于切割0.5-25mm碳钢板,0.5-16mm不锈钢板,镀锌板,电解板,冷轧板,0.5-16mm铝合金板,0.5-10mm黄铜与紫铜等金属材料。

Laser cutting of sheet metal is specially used for cutting 0.5-25mm carbon steel plate, 0.5-16mm stainless steel plate, galvanized sheet, electrolytic plate, cold-rolled plate, 0.5-16mm aluminum alloy, 0.5-10mm brass and copper and other metal materials.

产品特点 PRODUCT FEATURES

- ▶ 欧盟CE标准防护玻璃,安全无污染;
- ▶ 采用进口原装的激光器和激光头,同价位配置更高,性能更稳定;
- ▶ 采用新一代航空铝横梁,更轻,运行速度更快;
- ▶ 新一代床身工艺,采用分段式焊接床身,20年使用不变形;
- ▶ 国际一线导轨传动结构与伺服电机,保证机器稳定运行。

- ▶ It adopts EU CE standard protective glass with high safety and non-pollution.
- ▶ Using imported original laser and laser head the configuration is higher and the performance is more stable at the same price.
- ▶ It adopts a new generation of aviation aluminum cross beam, lighter and faster.
- ▶ A new generation of bed technology, using segmented welding bed, 20 years service life without deformation.
- ▶ International first-class guideway transmission structure and servo motor ensure the stable operation of the machine.

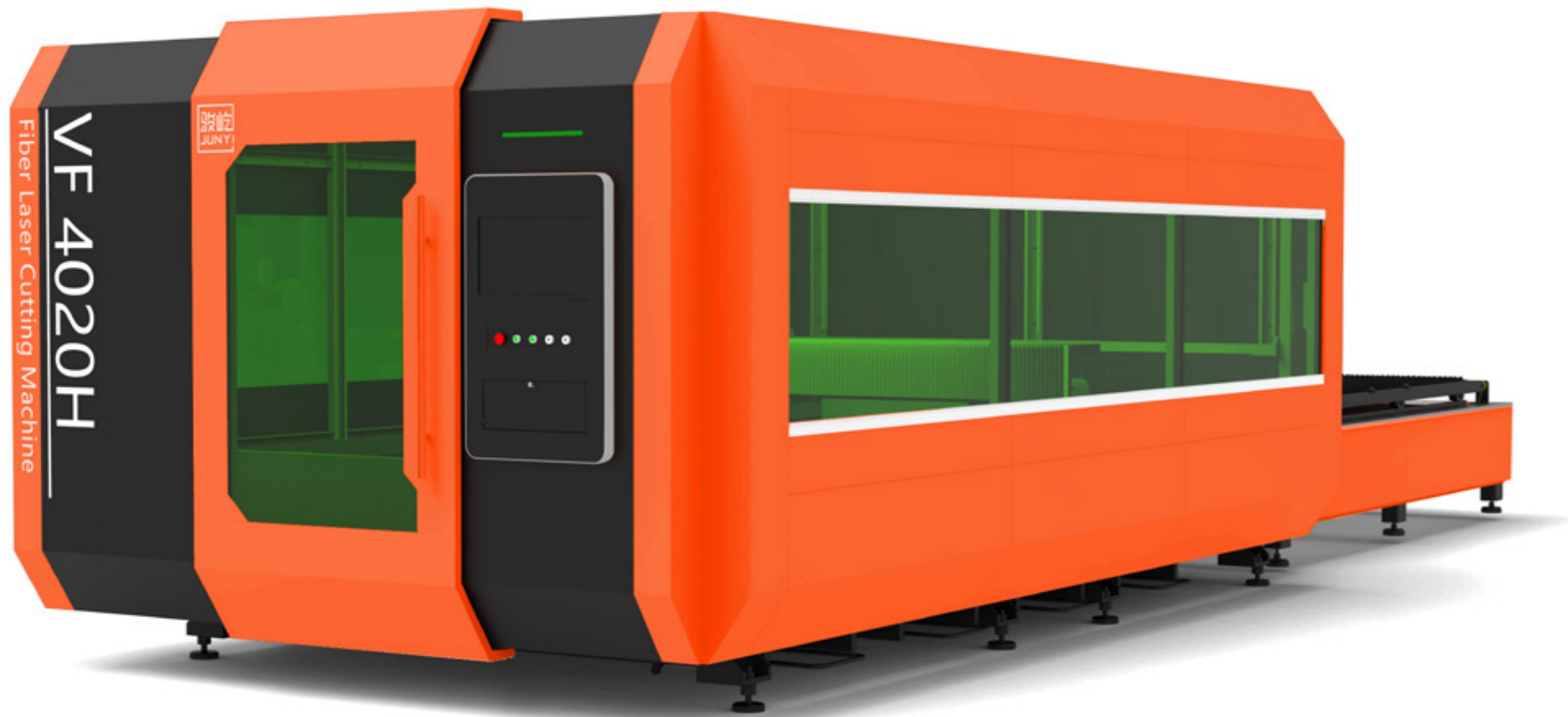


切割案例
CUTTING CASE



VF-4020H 光纤激光切割机

VF-4020H FIBER LASER CUTTING MACHINE
高刚性/高稳定性/高精度/高效防尘



VF-4020H技术参数 VF-4020H Technical Parameter

加工幅面(长×宽) Working area (length×width)	4000*2000mm*2
X轴行程 X-axis stroke	2000mm
Y轴行程 Y-axis stroke	4000mm
X/Y轴定位精度 Positioning precision of X/Y axis	±0.02mm/m
X/Y轴重复定位精度 Repositioning resolution of X/Y axis	±0.03mm
最大速度 Maximum speed	100000mm/min
数控系统 Numerical control system	柏楚/维宏/MAX
相数 Phase	3
电源额定电压 Rated voltage	380V
频率 Frequency	50Hz
产品功率段 Laser power	2000W-12000W
总电源防护等级 Protection rating of main power	IP54

适用范围 SCOPE OF APPLICATION

板材激光切割专用于切割0.5-25mm碳钢板,0.5-16mm不锈钢板,镀锌板,电解板,冷轧板,0.5-16mm铝合金板,0.5-10mm黄铜与紫铜等金属材料。

Laser cutting of sheet metal is specially used for cutting 0.5-25mm carbon steel plate, 0.5-16mm stainless steel plate, galvanized sheet, electrolytic plate, cold-rolled plate, 0.5-16mm aluminum alloy, 0.5-10mm brass and copper and other metal materials.

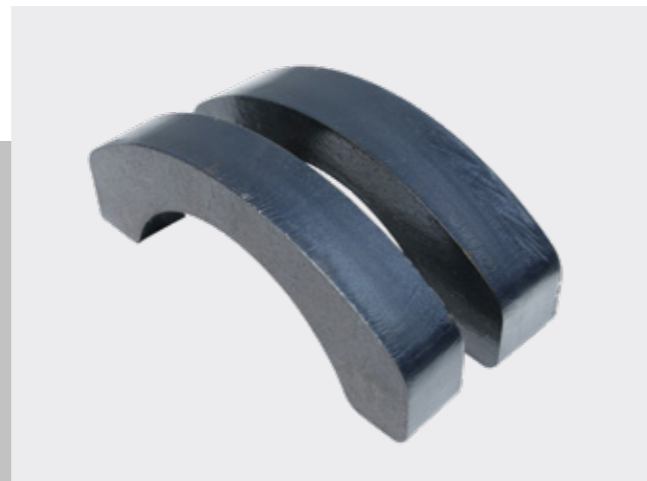
产品特点 PRODUCT FEATURES

- ▶ 欧盟CE标准防护玻璃,安全无污染;
- ▶ 采用进口原装的激光器和激光头,同价位配置更高,性能更稳定;
- ▶ 采用新一代航空铝横梁,更轻,运行速度更快;
- ▶ 新一代床身工艺,采用分段式焊接床身,20年使用不变形;
- ▶ 国际一线导轨传动结构与伺服电机,保证机器稳定运行。

- ▶ It adopts EU CE standard protective glass with high safety and non-pollution.
- ▶ Using imported original laser and laser head the configuration is higher and the performance is more stable at the same price.
- ▶ It adopts a new generation of aviation aluminum cross beam, lighter and faster.
- ▶ A new generation of bed technology, using segmented welding bed, 20 years service life without deformation.
- ▶ International first-class guideway transmission structure and servo motor ensure the stable operation of the machine.

骏屹
JUNYI

切割案例
CUTTING CASE



VF-6015 光纤激光切割机

VF-6015 FIBER LASER CUTTING MACHINE
高刚性/高稳定性/高精度/高效防尘



VF-6015技术参数 VF-6015 Technical Parameter

加工幅面(长 × 宽) Working area (length × width)	6000*1500mm
X轴行程 X-axis stroke	1500mm
Y轴行程 Y-axis stroke	6000mm
X/Y 轴定位精度 Positioning precision of X/Y axis	±0.02mm/m
X/Y 轴重复定位精度 Repositioning resolution of X/Y axis	±0.03mm
最大速度 Maximum speed	100000mm/min
数控系统 Numerical control system	柏楚/维宏/MAX
相数 Phase	3
电源额定电压 Rated voltage	380V
频率 Frequency	50Hz
产品功率段 Laser power	1500W-6000W
总电源防护等级 Protection rating of main power	IP54

适用范围 SCOPE OF APPLICATION

用于8-25mm碳钢板, 5-16mm不锈钢板, 镀锌板, 电解板, 冷轧板, 3-16mm铝合金板, 3-10mm黄铜与紫铜等金属材料。

Used for 8-25mm carbon steel plate, 5-16mm stainless steel plate, galvanized sheet, electrolytic plate, cold-rolled plate, 3-16mm aluminum alloy, 3-10mm brass and copper and other metal materials.

产品特点 PRODUCT FEATURES

- ▶ 高性能机床, 独家制作工艺, 20年使用不变形;
- ▶ 一线品牌激光器, 光束质量好, 光路更精确;
- ▶ 采用进口导向传动原件和伺服电机, 高精度, 高速度;
- ▶ 耗电量极低, 有效控制使用成本;
- ▶ 智能化人机交互界面, 易于学习和操作;
- ▶ 标准化加工幅面, 完美适配大部分板材切割。

- ▶ High-performance machine tools, exclusive manufacturing process, 20years service life without deformation.
- ▶ The first-class brand laser has good beam quality and more accurate optical path.
- ▶ We imported guide transmission original parts and servo motor, high precision and high speed.
- ▶ Low electric consumption could help you control the cost.
- ▶ Intelligent man-machine interface, easy to learn and operate.
- ▶ Standardized processing format, perfectly fit for most plate cutting.



切割案例
CUTTING CASE



VF-60 光纤激光切割机

VF-60 FIBER LASER CUTTING MACHINE
高刚性/高稳定性/高精度/高效防尘



VF-60技术参数 VF-60 Technical Parameter

加工幅面(长 × 宽) Working area (length × width)	6000*2000mm/6000*2500mm
X轴行程 X-axis stroke	2000mm/2500mm
Y轴行程 Y-axis stroke	6000mm
X/Y 轴定位精度 Positioning precision of X/Y axis	±0.02mm/m
X/Y 轴重复定位精度 Repositioning resolution of X/Y axis	±0.03mm
最大速度 Maximum speed	100000mm/min
数控系统 Numerical control system	柏楚/维宏/MAX
相数 Phase	3
电源额定电压 Rated voltage	380V
频率 Frequency	50Hz
产品功率段 Laser power	3000W-6000W
总电源防护等级 Protection rating of main power	IP54

适用范围 SCOPE OF APPLICATION

用于8-25mm碳钢板, 5-16mm不锈钢板, 镀锌板, 电解板, 冷轧板, 3-16mm铝合金板, 3-10mm黄铜与紫铜等金属材料。

Used for 8-25mm carbon steel plate, 5-16mm stainless steel plate, galvanized sheet, electrolytic plate, cold-rolled plate, 3-16mm aluminum alloy, 3-10mm brass and copper and other metal materials.

产品特点 PRODUCT FEATURES

- ▶ 高性能机床, 独家制作工艺, 20年使用不变形;
 - ▶ 一线品牌激光器, 光束质量好, 光路更精确;
 - ▶ 采用进口导向传动原件和伺服电机, 高精度, 高速度;
 - ▶ 耗电量极低, 有效控制使用成本;
 - ▶ 智能化人机交互界面, 易于学习和操作;
 - ▶ 标准化加工幅面, 完美适配大部分板材切割。
- ▶ High-performance machine tools, exclusive manufacturing process, 20years service life without deformation.
 - ▶ The first-class brand laser has good beam quality and more accurate optical path.
 - ▶ We imported guide transmission original parts and servo motor, high precision and high speed.
 - ▶ Low electric consumption could help you control the cost.
 - ▶ Intelligent man-machine interface, easy to learn and operate.
 - ▶ Standardized processing format, perfectly fit for most plate cutting.

骏屹
JUNYI

切割案例
CUTTING CASE



VF-60H 光纤激光切割机

VF-60H FIBER LASER CUTTING MACHINE
高刚性/高稳定性/高精度/高效防尘



VF-60H技术参数 VF-60H Technical Parameter

加工幅面(长 × 宽) Working area (length × width)	6000*2000mm*2/6000*2500mm*2
X轴行程 X-axis stroke	2000mm/2500mm
Y轴行程 Y-axis stroke	6000mm
X/Y 轴定位精度 Positioning precision of X/Y axis	±0.02mm/m
X/Y 轴重复定位精度 Repositioning resolution of X/Y axis	±0.03mm
最大速度 Maximum speed	150000mm/min
数控系统 Numerical control system	柏楚/维宏/MAX
相数 Phase	3
电源额定电压 Rated voltage	380V
频率 Frequency	50Hz
产品功率段 Laser power	6000W-30000W
总电源防护等级 Protection rating of main power	IP54

适用范围 SCOPE OF APPLICATION

板材激光切割专用于0.5-50mm碳钢板, 0.5-50mm不锈钢板, 镀锌板, 电解板, 冷轧板, 0.5-30mm铝合金板, 0.5-20mm黄铜与紫铜等金属材料。

Laser cutting of sheet metal is specially used for 0.5-50mm carbon steel plate, 0.5-50mm stainless steel plate, galvanized sheet, electrolytic plate, cold-rolled plate, 0.5-30mm aluminum alloy, 0.5-20mm brass and copper and other metal materials.

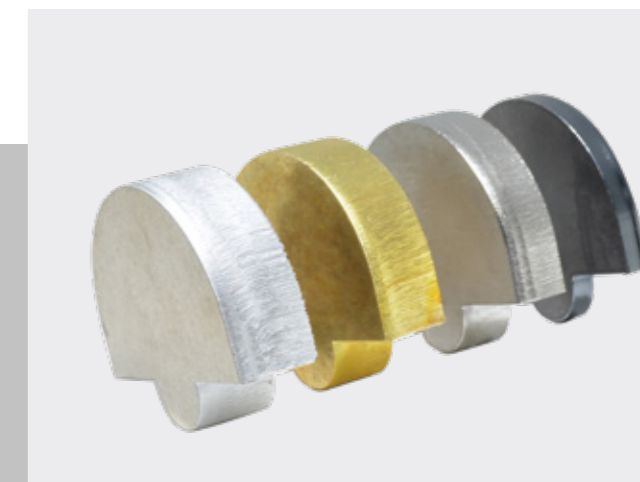
产品特点 PRODUCT FEATURES

- ▶ 采用先进的T型高抗热钢梁, 重型板焊床身;
- ▶ 包围钣金采用新型可拆卸箱体式设计, 方便运输;
- ▶ 双显示屏, 带360度监视系统, 安全性高, 操控便捷;
- ▶ 中空镂底设计, 新一代环保分段抽风除尘系统, 高效环保。

- ▶ It adopts T type steel beam with high heat resistance and heavy sheet-welded basement.
- ▶ The detachable design of enclosed sheet makes the transportation easier.
- ▶ Double display screen with all-round witness system would improve the security performance and facilitate the operation.
- ▶ The newest chamber dust removal device with hollow design provides new idea with green production.

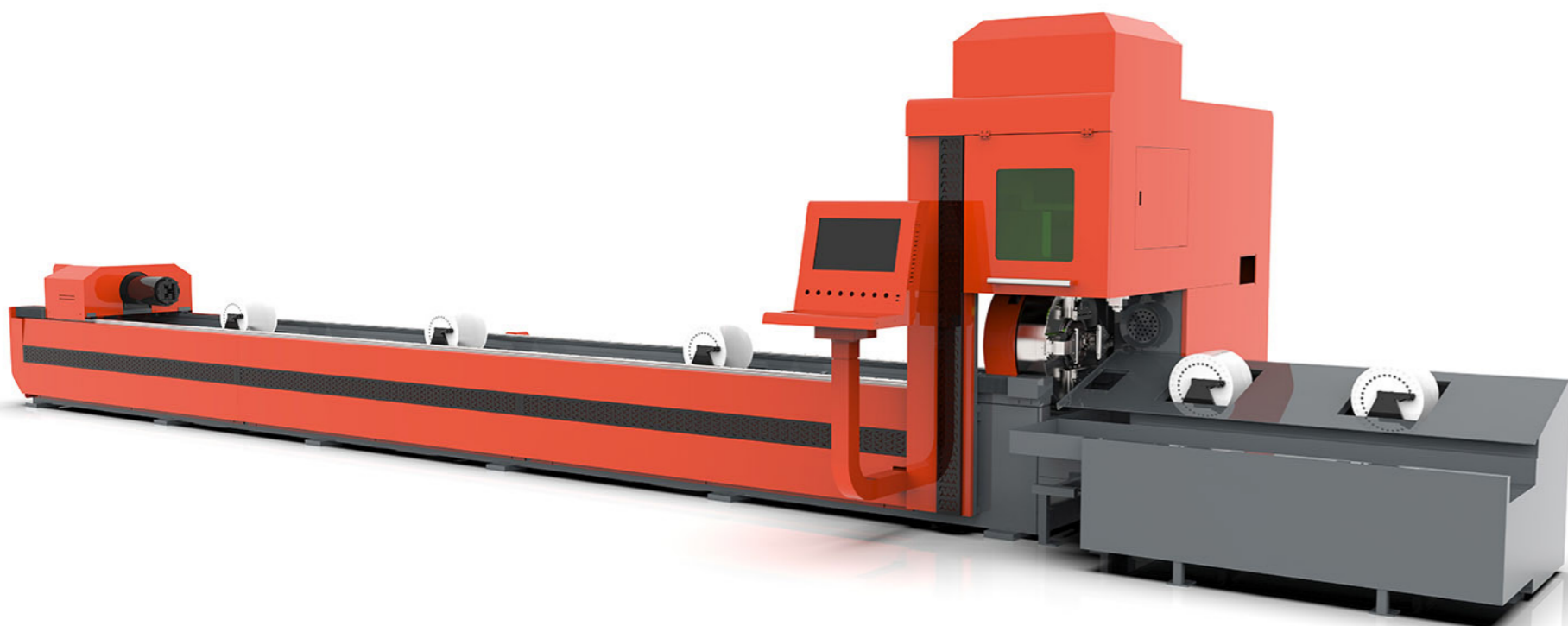


切割案例
CUTTING CASE



VF-60G 光纤激光切管机

VF-60G FIBER LASER TUBE CUTTING MACHINE
高刚性/高稳定性/高精度/高效防尘



VF-60G技术参数 VF-60G Technical Parameter

加工管材范围 Suitable aperture range	圆管φ15-φ120mm 方管φ10-φ85mm
—	圆管φ15-φ220mm 方管φ10-φ160mm
—	圆管φ15-φ320mm 方管φ10-φ230mm
ABC轴最大转速 Maximum speed of ABC axis	110rpm
X轴最大加速度 X-axis maximum acceleration	1G
最大转速 Maximum idling speed	160r/min
最大承重 Maximum load-bearing	170kg/200kg/300kg
上料长度 Loading length	220mm-6100mm
尾料长度 Tailings length	≥0mm
相数 Phase	3
产品功率段 Laser power	1500W-6000W
总电源防护等级 Protection rating of main power	IP54

适用范围 SCOPE OF APPLICATION

针对管材、型材市场需求,采用最新切割系统;该机可满足不同金属材料管材、型材的切断、开孔、轮廓切割,可应用于石油化工、体育器械、建筑机械、电梯制造等行业。

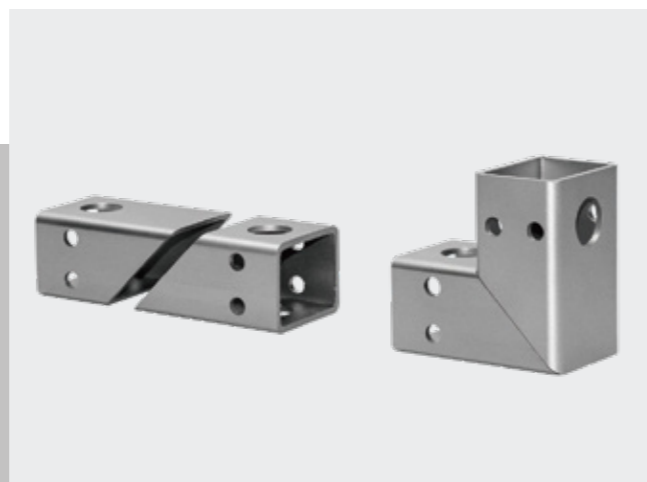
VF 60G tube cutting machine adopts the newest software to meet the requirement of tube and section bar processing, which plays a critical role in cutting, trepanning and contour cutting. It is widely applied in these industries, like petrochemical, fitness equipment, construction machinery and elevator manufacturing industry.

产品特点 PRODUCT FEATURES

- ▶ 切割精度高,轮廓精度可实现±0.05mm;
 - ▶ 切口平整、无毛刺、割缝小,轻松完成复杂图形切割;
 - ▶ 柔性加工,采用专业操作系统和套料软件,可实现高效批量化加工。
- ▶ This machine is helpful for improving the contour accuracy, which could realize ±0.05mm cutting precision.
 - ▶ Complex graphics can be processed easily with smooth cut and small kerf width.
 - ▶ We persist in the flexible manufacturing by adopting the professional control system and nesting software, so as to realize the mass production.



切割案例
CUTTING CASE



VF-60G-8Z 光纤激光切管机

VF-60HG FIBER LASER TUBE CUTTING MACHINE
高刚性/高稳定性/高精度/高效防尘



VF-60G-8Z技术参数 VF-60G-8Z Technical Parameter

管材加工尺寸 Pipe processing size (length)	6000mm-9000mm (长度可定制)
切割管径 Suitable aperture range	圆管φ20-φ350mm 方管φ16-φ245mm
最大承重 Maximum load-bearing	300KG
工作台重复定位精度 Table repeatability accuracy	≤ ±0.03mm
最大转速 Maximum idling speed	200r/min
切割尾料余料 Cutting tailings	0mm
产品功率段 Laser power	3000W-6000W
相数 Phase	3
电源额定电压 Rated voltage	380V
频率 Frequency	50Hz
总电源防护等级 Protection rating of main power	IP54

适用范围 SCOPE OF APPLICATION

针对中型、重型管材设计研发,采用多点定心卡盘,可选配自动上下料库,灵活的随动装置帮助中、重型管材顺利加工。

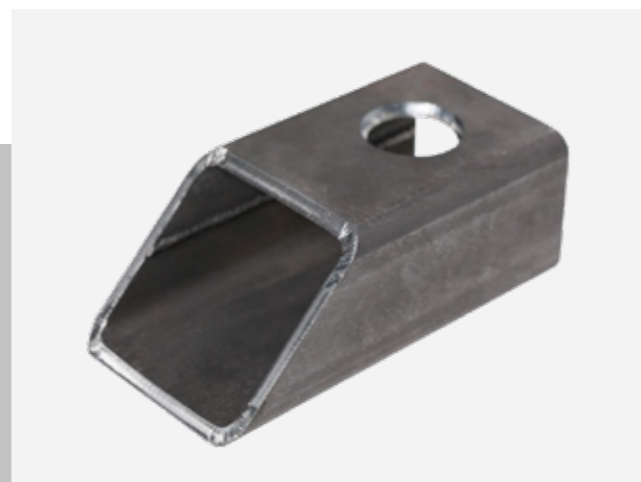
It is designed to process the medium-sized and heavy tubes, which equipped with the multi-point centering chuck, optional automatic feeding device matches with a set of flexible following device would be your great assistant.

产品特点 PRODUCT FEATURES

- ▶ 三卡盘结构,双切割工位,“零”尾料激光切管加工;
 - ▶ 专业管材切割编程软件,支持角钢、槽钢、工字钢及异形管材切割加工,能有效节省材料,提高切割效率;
 - ▶ 采用先进的伺服辅助支撑装置,保证有效支撑,防止管材的下垂,确保加工精度;
 - ▶ 具备尖角、棱边、转角转脉冲、多种切割工艺控制功能,保证切割尖角轮廓断面质量和切割效率;
- ▶ Three-chuck structure, double cutting stations, "zero" tailings laser tube cutting processing;
 - ▶ Professional cutting software makes material saving and efficiency possible, especially when you process the angle steel, U-steel, I-beam and special shaped pipes;
 - ▶ Floating support and great precision are benefit from the advanced servo support device;
 - ▶ Our machine could guarantee the quality and efficiency of corner cutting with the help of multiple craft control function.

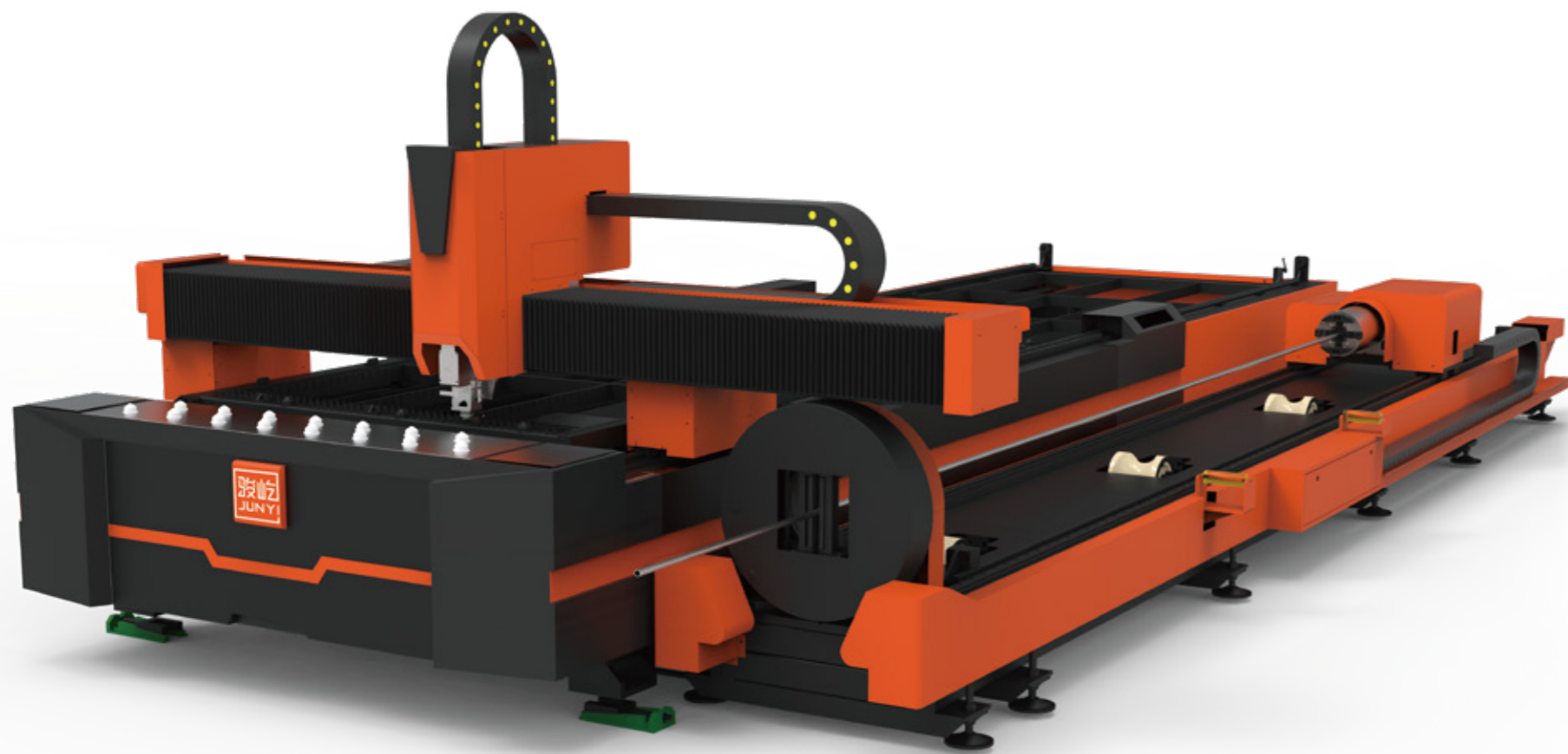


切割案例
CUTTING CASE



VF-60HG 光纤激光切割板管一体机

VF-60HG OPTICAL FIBER LASER CUTTING TUBE&SHEET ALL-IN ONE MACHINE
高刚性/高稳定性/高精度/高效防尘



VF-60HG技术参数 VF-60HG Technical Parameter

加工幅面(长 × 宽) Working area (length × width)	6000*1500mm/6000*2000mm
X轴行程 X-axis stroke	1500mm/2000mm
Y轴行程 Y-axis stroke	6000mm
X/Y 轴定位精度 Positioning precision of X/Y axis	±0.02mm/m
X/Y 轴重复定位精度 Repositioning resolution of X/Y axis	±0.03mm
最大速度 Maximum speed	90000mm/min
数控系统 Numerical control system	柏楚/维宏/MAX
电源额定电压 Rated voltage	380V
产品功率段 Laser power	2000W-6000W
管材加工范围 Pipe processing range	圆管φ15-φ120mm 方管φ10-φ160mm
—	圆管φ15-φ220mm 方管φ10-φ160mm
管材加工长度 Pipe processing length	6000mm

适用范围 SCOPE OF APPLICATION

适用于包括石油管材、健身器材、金属管材为主的机械加工，汽车制造、机箱机柜等板材为主的机械加工等。

It is suitable for machining mainly including oil pipes, fitness equipment, metal pipes, automobile manufacturing, cabinets and other plates.

产品特点 PRODUCT FEATURES

- ▶ 集板材与管材切割功能于一体，一机两用加工能力强，应用更广泛
- ▶ 相对于同时使用两台机器，采购成本节省40%，占地面积节省50%，有效降低前期投入。
- ▶ 简约一体式设计，占地面积小，摆放灵活，集成式电柜，快速投产。

- ▶ Pipe and sheet mixed fiber laser cutting machine has strong processing ability, and it could be applied in a wide range of industry.
- ▶ Compared with using two machines at the same time, the procurement cost is saved by 40%, the floor area is saved by 50%, and the upfront investment is effectively reduced.
- ▶ Simple all-in-one design, small footprint, flexible placement, integrated cabinet, fast production.

骏屹
JUNYI

切割案例
CUTTING CASE



VF-12025 光纤激光切割机

VF-12025 FIBER LASER CUTTING MACHINE
高刚性/高稳定性/高精度/高效防尘



VF-12025技术参数 VF-12025 Technical Parameter

加工幅面(长 × 宽) Working area (length × width)	12000*2500mm(长度/宽度可定制)
X轴行程 X-axis stroke	2500mm(可定制)
Y轴行程 Y-axis stroke	12000mm(可定制)
X/Y 轴定位精度 Positioning precision of X/Y axis	±0.05mm/m
X/Y 轴重复定位精度 Repositioning resolution of X/Y axis	±0.03mm
最大速度 Maximum speed	90000mm/min
数控系统 Numerical control system	柏楚/维宏/MAX
相数 Phase	3
电源额定电压 Rated voltage	380V
频率 Frequency	50Hz
产品功率段 Laser power	12000W-30000W
总电源防护等级 Protection rating of main power	IP54

适用范围 SCOPE OF APPLICATION

用于航空航天、石油装备、汽车制造、船舶制造、铁路轨道、智能产线等众多领域的大幅面中厚金属板材切割。

Used for cutting large and medium thick metal plates in aerospace, petroleum equipment, automobile manufacturing, shipbuilding, railway track, intelligent production line and many other fields.

产品特点 PRODUCT FEATURES

- ▶ 加强型焊接床身, 高温回火处理振动时效消除应力, 中空结构机床, 无骨工作台结构;
- ▶ 床身每段设有分时、分区、分段的排烟装置, 可实现随动精准排烟;
- ▶ 选用总线操作系统, 提升机床运动性能, 拓展性更强, 加工效率更高;
- ▶ 切割头具备双冷结构, 智能防撞、自动调高功能。

- ▶ Reinforced welding bed, high temperature tempering treatment, vibration aging to eliminate stress, hollow structure machine tool, boneless table structure;
- ▶ Powerful dust removing and green production rely on the chamber dust removal design of the basement;
- ▶ Bus operating system plays a critical role in improving the kinematic performance, extensibility and cutting efficiency;
- ▶ The cutting head has double colling structure, it could prevent the head bumping by automatically adjust the height.



切割案例
CUTTING CASE



VF-15030 (可定制坡口切割) 光纤激光切割机

VF-15030 OPTICAL FIBER LASER CUTTING TUBE&SHEET ALL-IN ONE MACHINE
高刚性/高稳定性/高精度/高效防尘



VF-15030技术参数 VF-15030 Technical Parameter

加工幅面(长×宽) Working area (length×width)	15000*3000mm
X轴行程 X-axis stroke	3000mm(可定制到5米)
Y轴行程 Y-axis stroke	15000mm(可定制到50米)
X/Y轴定位精度 Positioning precision of X/Y axis	±0.05mm
X/Y轴重复定位精度 Repositioning resolution of X/Y axis	±0.03mm
最大加速度 Maximum acceleration	1.5G
数控系统 Numerical control system	柏楚/维宏/MAX
相数 Phase	3
电源额定电压 Rated voltage	380V
频率 Frequency	50Hz
产品功率段 Laser power	20000W-30000W
总电源防护等级 Protection rating of main power	IP54

适用范围 SCOPE OF APPLICATION

超大幅面激光切割机作为厚板切割的经典之作,分段床身、自由定制加工幅面,广泛应用于船舶重工、钢结构、石油化工、专用车辆制造和工程机械等领域。

As a classic machine for thick metal sheet cutting, it has a rational structure of basement, which supports customized length due to the segmented design.

产品特点 PRODUCT FEATURES

- ▶ 重型板焊床身,榫卯结构;承重性强,稳定切割;
- ▶ 配备德国原装切割头,实现小锥度、高亮面切割效果;
- ▶ 二次开发德国智能操作系统,呈现更科学的操作界面;
- ▶ 可选装坡口切割,0-45°切割一次成型。

- ▶ Heavy steel-welding basement matches with tenon and mortise structure could ensure high load ratings and stability;
- ▶ The machine adopts the original cutting head, made in German, which could cut the parts with small taper and smooth surface;
- ▶ Secondary developed control system brings a more simple and friendly operation platform;
- ▶ The bevel cutting is regarded as an optional choice, which could achieve one time cutting from 0 to 45-degree angle.

骏屹
JUNYI

切割案例
CUTTING CASE



精密激光切割机

PRECISION LASER CUTTING MACHINE
高刚性/高稳定性/高精度/高效防尘



技术参数 Technical Parameter

加工幅面(长 × 宽) Working area (length × width)	600*600mm/800*800mm
最大加速度 Maximum acceleration	1.5G
X轴快速移动速度 X-axis rapid movement speed	60m/min
X轴有效行程 X-axis effective stroke	600mm/800mm
X轴定位精度 X-axis positioning accuracy	±0.02mm
X轴重复精度 X-axis repeatability	±0.005mm
Y轴快速移动速度 Y-axis rapid movement speed	60m/min
Y轴有效行程 Y-axis effective travels	600mm/800mm
Y轴定位精度 Y-axis positioning accuracy	±0.02mm
Y轴重复精度 Y-axis repeatability	±0.005mm
Z轴行程 Z-axis travels	100mm

适用范围 SCOPE OF APPLICATION

精密切割机的设计理念是实现金属薄板高精度、快速切割、小割缝的切割效果,该设备目前被广泛应用于精密电子、酒店装饰、手机数码、灯饰、钟表等行业。

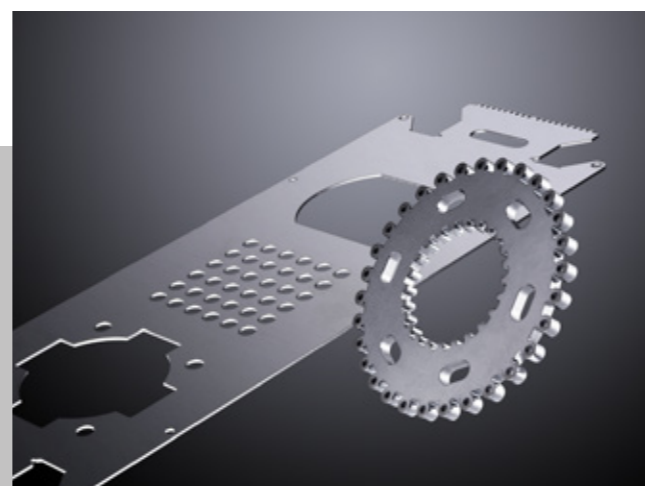
The precision cutter is designed to reach a precise cutting effect with fast speed and small kerf width, which is popular with customers who work at 3C electronic, hotel decoration, digital device, lighting and clock fitting industry.

产品特点 PRODUCT FEATURES

- ▶ 采用日本THK精密直线导轨,定位精度高,磨损少;
- ▶ 支持多种模式的轴螺距补偿,确保机床的加工精度;
- ▶ Ethercat总线式前端数控系统,极大的提升设备灵活性、可拓展性;
- ▶ 高效切割,高精度切割,材料利用率高,可扩展性强,灵活度高,占地面积小。
- ▶ Our machine has higher positioning accuracy and lower wear with the help of the sophisticated THK linear guides;
- ▶ Multiple modes of shaft pitch compensation is the key to improve the machining accuracy;
- ▶ Ethercat bus front-end CNC system greatly improves the flexibility, and scalability;
- ▶ It has a series of advantages: effective and precise cutting, high utilization, great scalability and flexibility.



切割案例
CUTTING CASE



手持焊接机

HAND-HELD WELDING MACHINE

焊缝美观/性能稳定/灵活便捷/节省人工



- ▶ 可广泛应用于金属设备、不锈钢等行业复杂不规则的焊接工艺。完美的替代传统的氩弧焊,在薄不锈钢板、铁板、铝板等金属材料焊接中进行电焊;
- ▶ 巧妙的内部设计和良好的交互控制系统,扩大了被加工零件的公差范围和焊缝宽度,解决了点焊微小的缺点,焊缝点形更好;
- ▶ 外观轻巧,车身工程设计方法,手感舒适;单手易于控制,操作方便;
- ▶ 具有多个安全报警,安全性高;
- ▶ 焊接美观,速度快,无耗材,无焊接痕迹,无变色,以后无需抛光;
- ▶ 可配置多种喷嘴,以满足不同产品的焊接需要。

- ▶ It can be widely used in complex and irregular welding processes, such as metal equipment and stainless steel industry; it is a perfect substitute machine for traditional argon arc welding, electric welding of thin stainless steel plates, iron plates, aluminum plates and other metal materials.
- ▶ Rely on the ingenious internal design and good interactive control system, it could expand the tolerance range of the processed parts and the width of the weld, so as to solve the shortcomings of electric welding with better effect of weld forming.
- ▶ With light weight appearance, comfortable feeling and advanced engineering design, workers could operate the machine by one hand.
- ▶ It has high level of safety because the machine equip with security alarm system.
- ▶ Beautiful welding, fast speed, no consumables, no welding traces, no discoloration, no need for polishing in the future.
- ▶ A variety of nozzles can be configured to meet the welding needs of different products.

技术参数 Technical Parameter

设备功率 Laser power	1500-3000W
运行模式 Operation mode	连续/调制
激光波长 Laser wavelength	1064nm
工作环境湿度范围 Working environment humidity range	<70%无冷凝
焊接厚度范围 Welding thickness range	0.5-8mm
焊缝要求 Welding seam requirements	≤3mm
焊接速度 Welding speed	0-120毫米/秒



手持清洗机

HAND-HELD WELDING MACHINE

精准清洗/安全环保/操作简单



骏屹新一代专业激光清洗机易于安装,操作简单,接通电源,打开设备,即可进行无化学试剂、无介质、无尘、无水的清洗,可贴合曲面清洗,清洗表面洁净度高,能够清除物件表面树脂、油漆、油污、污渍、污垢、锈蚀、涂层、镀层以及氧化层,且行业应用广泛,涵盖船舶、汽修、橡胶模具、高端机床、轨道以及环保等。

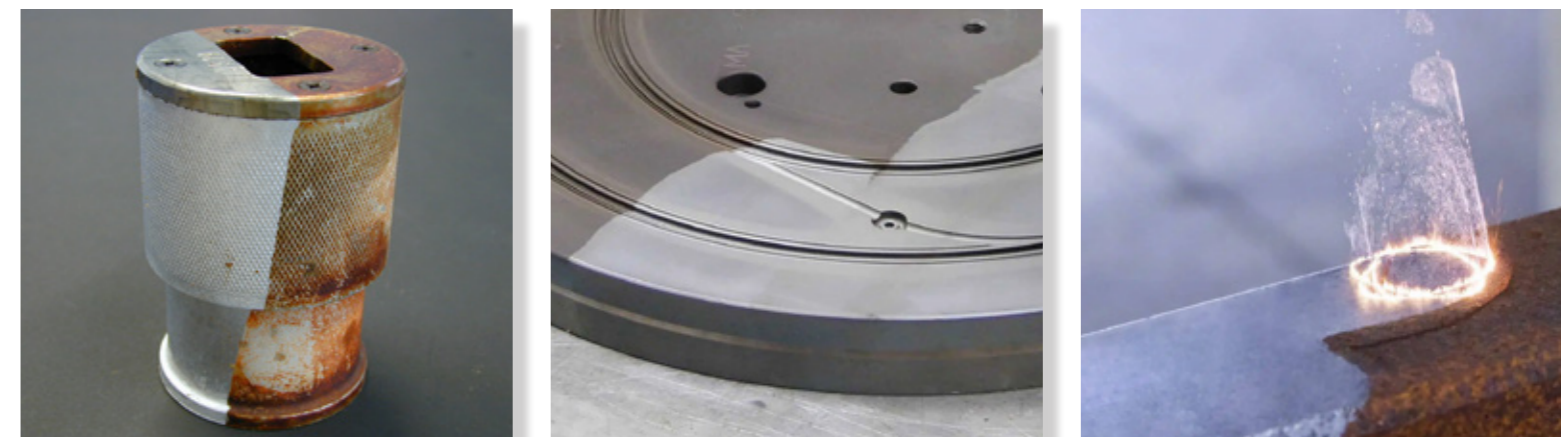
- ▶ 精准清洗,可实现精确位置、精确尺寸选择性清洗,不损伤零件基体;
- ▶ 不需任何化学清洗液,无耗材,安全环保;
- ▶ 人体工程学设计,操作简单,可手持或配合机械手实现自动化清洗;
- ▶ 激光清洗系统稳定,清洗效率高,节省时间;

Junyi's new generation of professional laser cleaning machine is easy to install, simple to operate, turn on the power supply, turn on the equipment, and then clean without chemical reagents, without media, without dust and without water. It can be cleaned with curved surfaces, and the cleaning surface is clean, can remove resin, paint, oil, stain, dirt, rust, coating, plating and oxide layer on the surface of the object, and it is widely used in the industry, covering ships, auto repair, rubber molds, high-end machine tools, rails, and environmental protection.

- ▶ Precise cleaning, which can realize selective cleaning of precise position and precise size, without damaging the base of the parts;
- ▶ No chemical cleaning solution, no consumables, safe and environmentally friendly;
- ▶ Ergonomic design, simple operation, automatic cleaning can be realized by hand or with a manipulator;
- ▶ The laser cleaning system is stable, the cleaning efficiency is high, and time is saved;

技术参数 Technical Parameter

设备功率 Laser power	1000W-2000W
激光功率调节 Laser power adjustment	10%~100%连续渐变可用
焦距 Focal length	500mm
扫描宽度 Scan width	可达300mm, 连续可调
脉冲频率调节 Pulse frequency adjustment	1KHz-2000KHz, 连续渐变可调(支持定制)
线缆长度 Cable length	标配10米
清洗模式 Cleaning mode	直线/矩形/圆形/正弦/双螺旋/自由



国际化销售 布局全球网络

International sales layout global network

历经多年的探索

与时俱进的营销理念

全方位的技术支持

强大的客户信息数据库

遍布全国的营销网络

只为构建与您沟通的最佳平台

After years of exploration

The marketing concept of keeping pace with the times

Full range of technical support

Strong customer information database

Marking network all over the country

Building the best platform to communicate with you

